



2-WAY AIR-PILOTED VALVES

2-WAY AIR-PILOTED VALVES

Two-way valves are the simplest pneumatic component – their function is merely to turn an air supply on or off. They may be compared to a beer tap, in the “on” position beer flows from the keg to the mug and in the “off” position the beer flow is stopped. Two-way air piloted valves may have a poppet or spool and when an air signal is applied to the pilot, a normally closed (NC) valve is opened and a normally open (NO) valve is closed. When the pilot signal is removed, the valve reverts back to its original position.

Medium: Air, Water or Oil

Materials: Brass body, Buna-N seals, stainless steel stem and spring

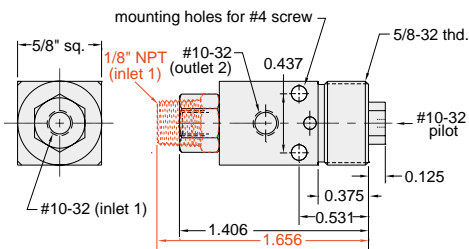
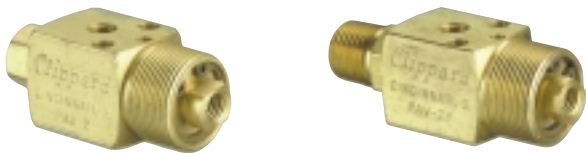
Stem Travel: 1/8”

Mounting: 5/8-32 thread or #4 screw. Nut and lockwasher may be ordered separately. Part Number: PAV-MH

Air Pilot Pressure: 15 psig min.

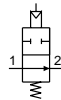
Foot Bracket: FB-1791

Air-Piloted Normally-Closed Poppet Valves

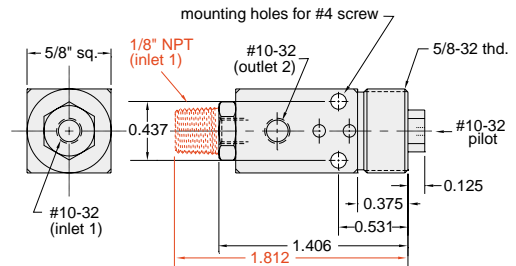


Input Pressure: 300 psig max.

Air Flow: 4.0 SCFM @ 50 psig; 6.8 SCFM @ 100 psig

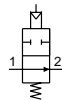


Air-Piloted Normally-Open Poppet Valves



Input Pressure: 150 psig max.

Air Flow: 6.8 SCFM @ 50 psig; 11.6 SCFM @ 100 psig



Part No.	Description
PAV-2	Normally-Closed Poppet Valve, #10-32
PAV-2P	Normally-Closed Poppet Valve, 1/8" NPT

Part No.	Description
PAVO-2	Normally-Open Poppet Valve, #10-32
PAVO-2P	Normally-Open Poppet Valve, 1/8" NPT

CARTRIDGE VALVE MOUNTING

Clippard miniature cartridge valves offer the user flexibility in the application of 2-way and 3-way normally open or normally closed valves. Two sizes are provided: to fit either a 0.375" diameter bore or 0.625" diameter bore. They are used in Clippard heavy duty limit switches and are suitable for pneumatic tools and manifolds or for any use where a valve needs to be built in.

